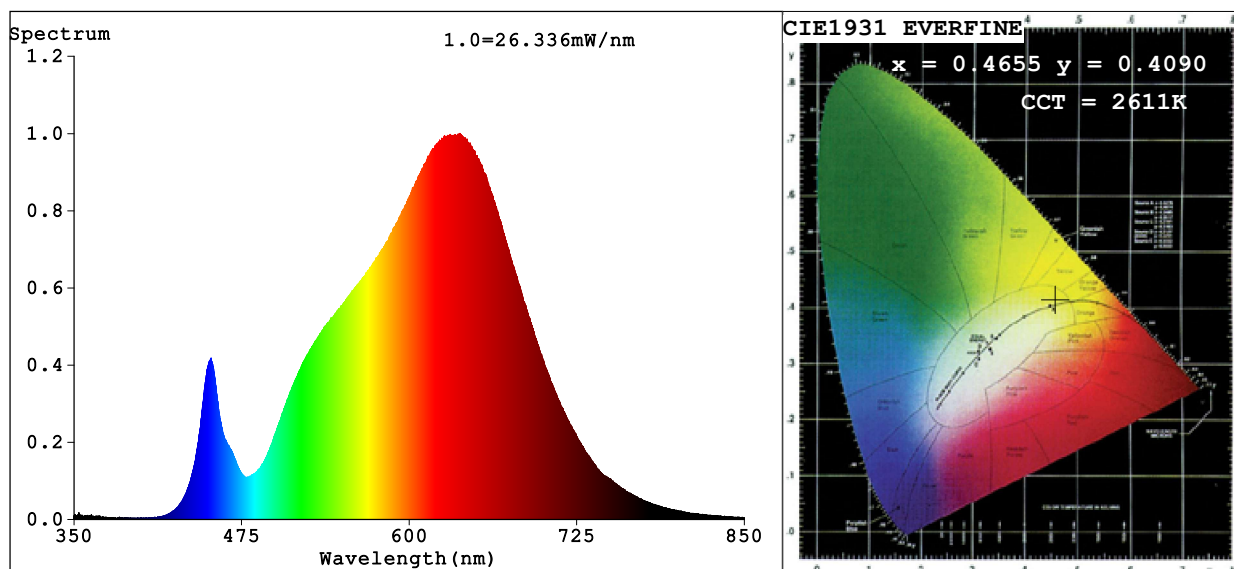


## Spectrum Test Report



### Color Parameters:

Chromaticity Coordinate:  $x=0.4655$   $y=0.4090$   $u'=0.2669$   $v'=0.5276$

CCT=2611K (Duv=-0.0010) Dominant WL:Ld =585.0nm Purity=62.5%

Ratio:R=27.1% G=71.0% B=1.8%; Peak WL:Lp=637.8nm FWHM=154.4nm

Render Index:Ra=92.3 CRI=89.4 TM30:Rf=89 Rg=103

R1 =93 R2 =95 R3 =93 R4 =93 R5 =92 R6 =92 R7 =94

R8 =87 R9 =69 R10=85 R11=92 R12=77 R13=94 R14=95 R15=91

### Photo Parameters:

Flux = 1156 lm Eff. : 71.78 lm/W Fe = 4.354 W

### Electrical parameters:

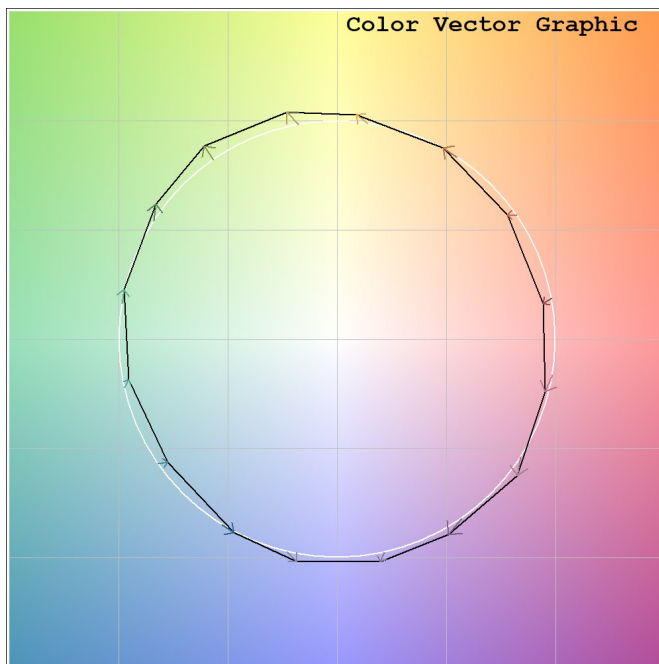
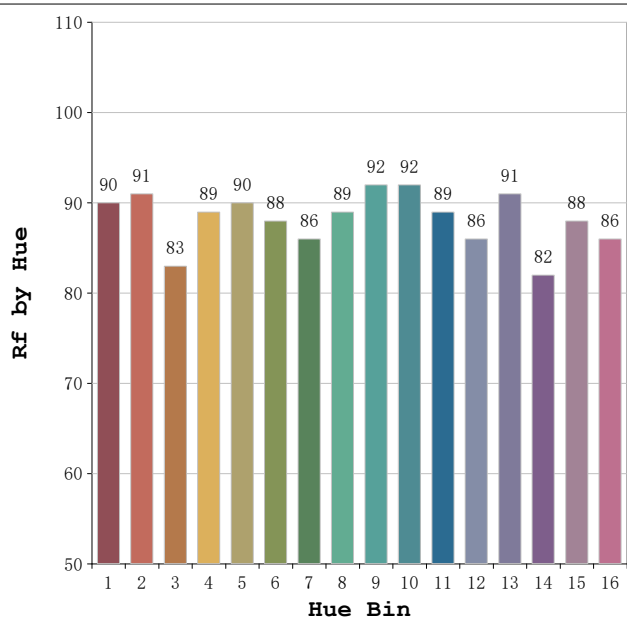
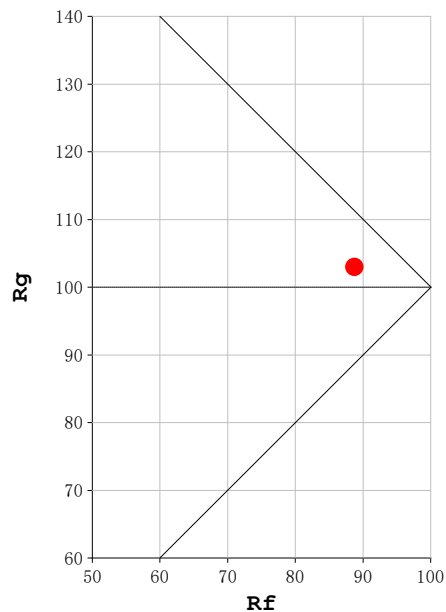
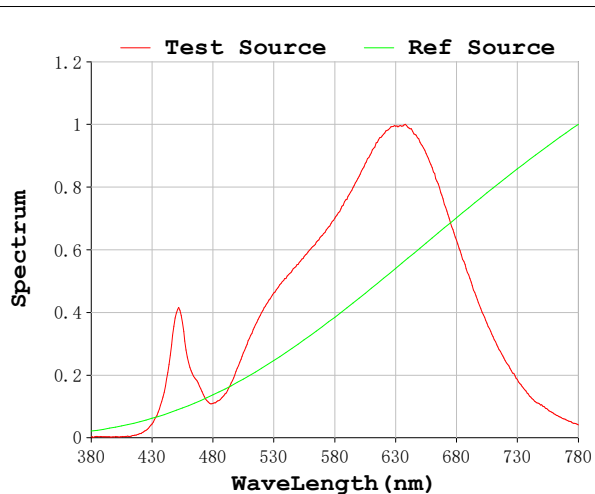
V = 23.998 V I = 0.6712 A P = 16.11 W PF = 1.000

Status: Integral T = 1269 ms Ip = 53896 (82%)

Model:Ecoled neón 3D Plus 2700  
Tester:Sergio Carneros  
Temperature:27Deg  
Manufacturer:Luz Negra S.L

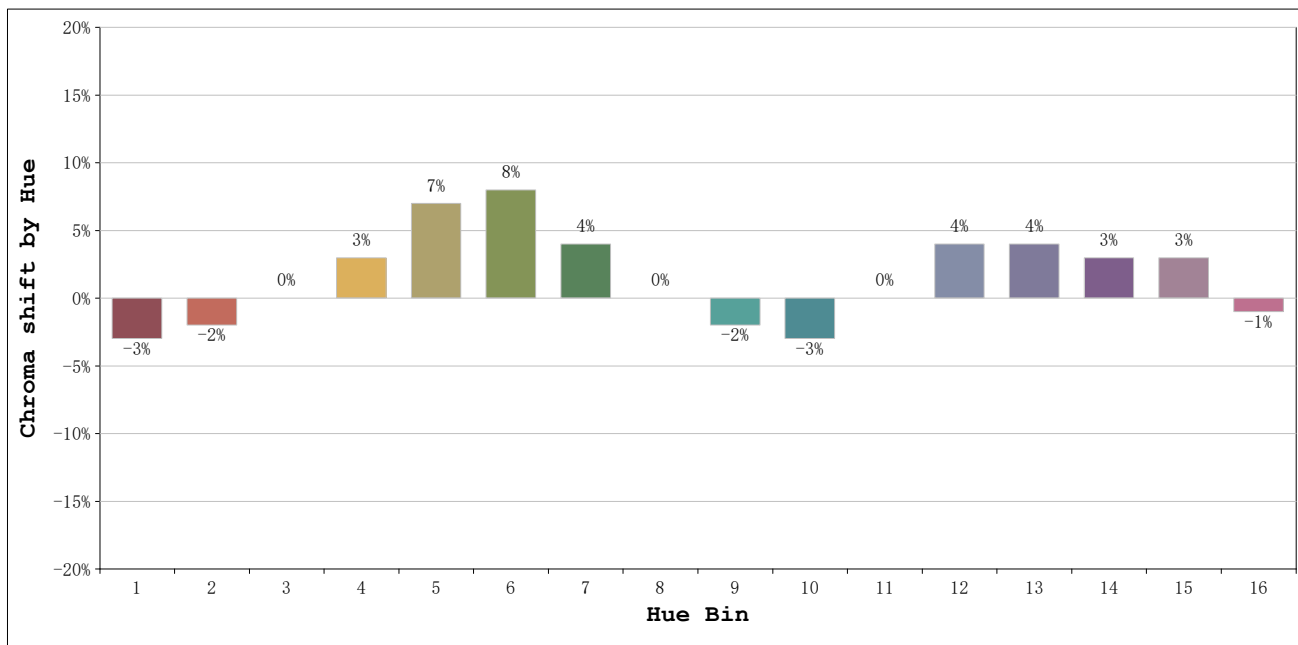
Number: 10.322  
Date:2025-08-26 12:11:38  
Humidity:40%  
Remarks:100cm de Neón

**Rf: 89**      **CCT: 2611 K**      **u': 0.2669**  
**Rg: 103**      **Duv: -0.0010**      **v': 0.5276**



Model:Ecoled neón 3D Plus 2700  
 Tester:Sergio Carneros  
 Temperature:27Deg  
 Manufacturer:Luz Negra S.L

Number: 10.322  
 Date:2025-08-26 12:11:38  
 Humidity:40%  
 Remarks:100cm de Neón



Hue Bin	Hue Angle	Rf	Graphic shift(%)	
			Chroma	Hue
1	0.0° - 22.5°	90	-3	0
2	22.5° - 45.0°	91	-2	3
3	45.0° - 67.5°	83	0	8
4	67.5° - 90.0°	89	3	6
5	90.0° - 112.5°	90	7	4
6	112.5° - 135.0°	88	8	0
7	135.0° - 157.5°	86	4	-6
8	157.5° - 180.0°	89	0	-6
9	180.0° - 202.5°	92	-2	-2
10	202.5° - 225.0°	92	-3	2
11	225.0° - 247.5°	89	0	7
12	247.5° - 270.0°	86	4	5
13	270.0° - 292.5°	91	4	-2
14	292.5° - 315.0°	82	3	-8
15	315.0° - 337.5°	88	3	-7
16	337.5° - 360.0°	86	-1	-7

Model:Ecoled neón 3D Plus 2700  
 Tester:Sergio Carneros  
 Temperature:27Deg  
 Manufacturer:Luz Negra S.L

Number: 10.322  
 Date:2025-08-26 12:11:38  
 Humidity:40%  
 Remarks:100cm de Neón